



REFRESH, UPGRADE, PERFORM

Tile production line improvements



ATM-ATE-PPB SELF-DIAGNOSTICS KIT

SACMI for flexibility

This kit allows you to improve the control of the slip atomiser and piston pump.

The upgrade is available for all ATM and ATE atomiser models and PPB piston pumps.

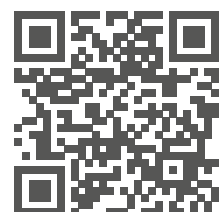


Extended capabilities

ADVANTAGES

- Improved process **consistency/repeatability**
- **Preventive maintenance** of wear parts
- More **accurate**, easier and faster problem identification
- Reduction of **unplanned downtime**

See other revamping solutions
for powder preparation





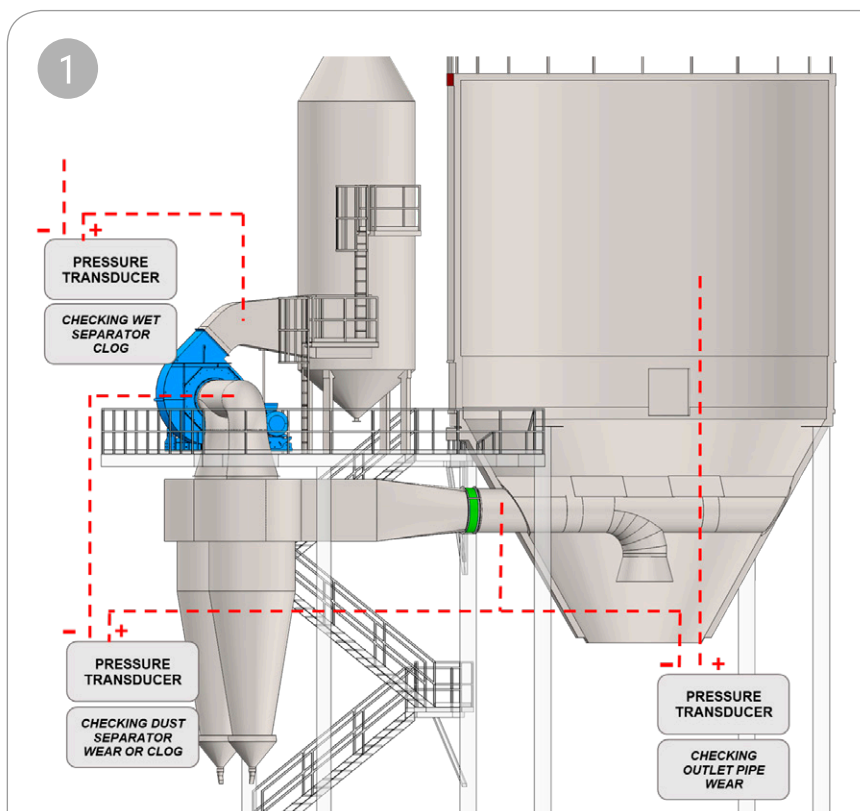
REFRESH, UPGRADE, PERFORM

Tile production line improvements



ATM-ATE-PPB SELF-DIAGNOSTICS KIT

Technical features



The kit includes a number of solutions that, when combined, will provide significant benefits in terms of machine control, management and uptime, process consistency and repeatability.

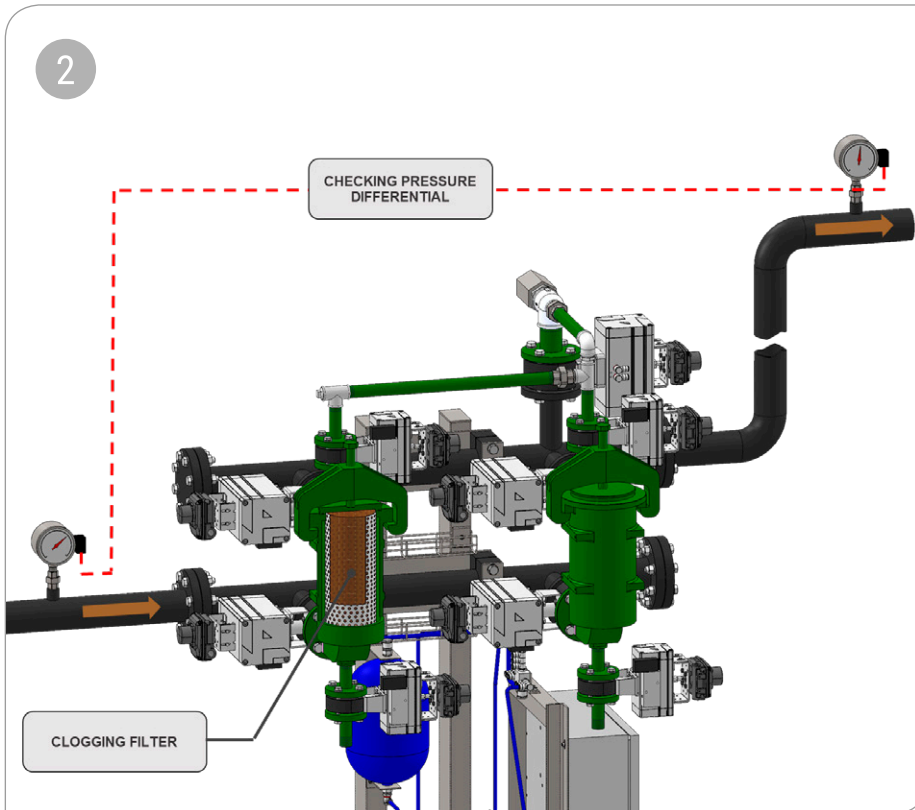
The upgrade includes:

1. Transducers in the **exhaust air duct** to detect wear or damage to the duct, cyclones, fan or shutter (if fitted) and/or scrubber/filter in advance.

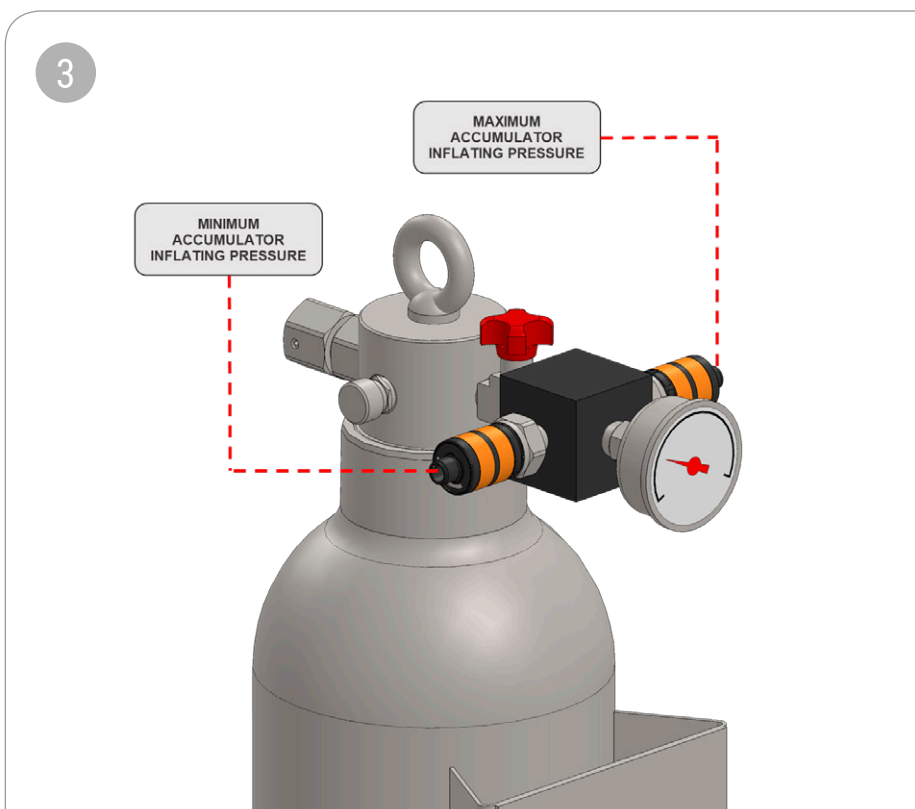


REFRESH, UPGRADE, PERFORM

Tile production line improvements



2. Measurement of pressure drop across **slip filters** to prevent clogging.

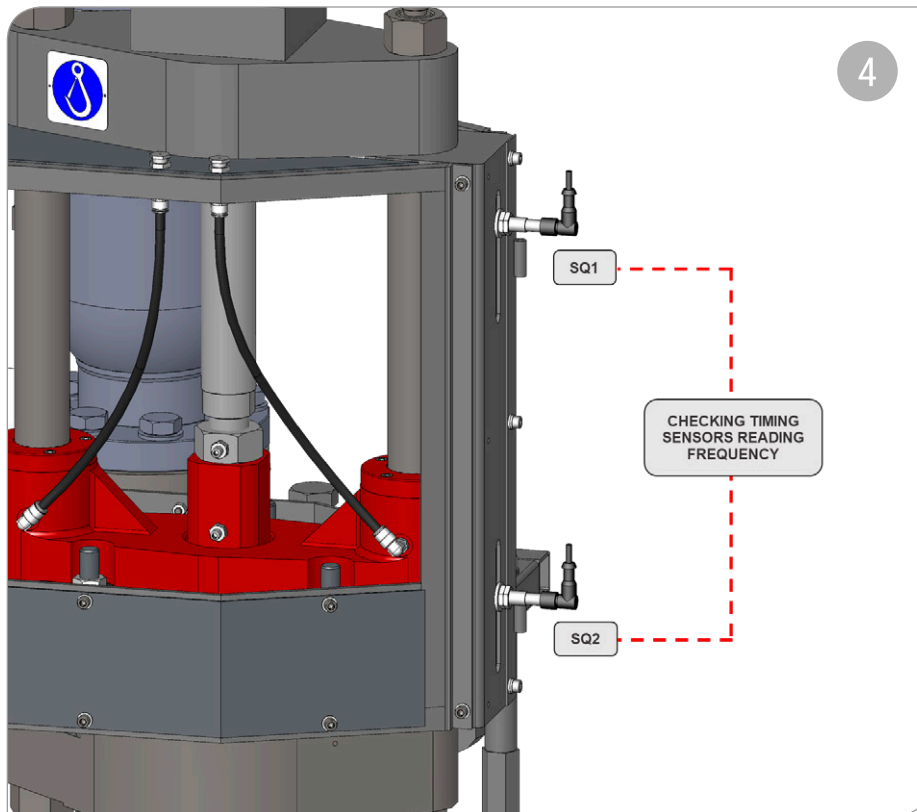


3. Measurement of the pressure in the PPB **accumulator** to prevent damage and a **pressure transducer** to monitor the oil pressure in the PPB control unit in relation to the atomiser pressure to detect hydraulic leaks in the circuit.



REFRESH, UPGRADE, PERFORM

Tile production line improvements



4. Software to check the phasing of the PPB pump pistons to ensure the correct setting of the reversing sensors

In all cases, if pre-set **alarm thresholds** are exceeded, the system **alerts the operator** so that appropriate action can be taken. This helps to prevent problems before they occur, such as unplanned downtime or loss of production.

The alarm generated by any of these instruments does NOT cause downtime, simplifying management and allowing maintenance to be planned in advance.